

GUIDING PRINCIPLES

- We will aim to comply fully with all the guidelines laid out by our provincial government.
- While we will ask our staff and volunteers to exceed the government guidelines, we will only require our attendees to follow the guidelines explicitly stated by the provincial government.

GATHERING TOGETHER IS BIBLICALLY VITAL

And let us consider how to stir up one another to love and good works, not neglecting to meet together, as is the habit of some, but encouraging one another, and all the more as you see the Day drawing near.

Hebrews 10:24-25

- Gatherings of God's people are places where we can:
- Consider one another (v24a)
- Stir up one another to love and good works (v24b)
- Habitually foster relationship (v25a)
- Encourage one another (v25b)
- Look forward together (v25c)

GATHERING MUST BE MARKED BY KINDNESS AND GRACE

Let all bitterness and wrath and anger and clamor and slander be put away from you, along with all malice. Be kind to one another, tenderhearted, forgiving one another, as God in Christ forgave you.

Ephesians 4:31-32

Why kindness now? Re-gathering can be a topic of significant quarrel and disagreement

OUR CONVICTION: Each person's decision to regather (or not) at this point in 2020 is a matter of Christian liberty.

- "Each one should be fully convinced in his own mind" (Rom 14:5)
- We must resolve "not to quarrel over opinions" (Rom 14:1)
- If you are not ready to return to in-person worship gatherings at this time, there is no pressure on you to return. We will continue to have online services and ministries.
- If you are ready to return to in-person worship gatherings at this time, we are looking forward to striving to regather in a safe manner.

2 OPPOSITE ATTITUDES WE MUST AVOID:

1. "You shouldn't stay at home. That's FAITHLESS"
2. "You shouldn't go to church. That's RECKLESS"

WHAT TO EXPECT

SELF ASSESSMENT

- We ask that attendees use this self-assessment tool before attending a service at Hope Church: (<https://covid-19.ontario.ca/self-assessment/>)
- Please do not attend if you've been exposed to someone who is symptomatic, or if you have traveled outside the province in the last 14 days.

REGISTRATION/CHECK INS:

- All those who wish to attend service will be required to register online through the PCO Registration link. Each individual member of a household must be registered.
- Our registration page will clearly outline expectations and screening requirements.
- Online registration is a one-time registration which will be limited to 150 standard registrants. All subsequent registrations will be placed on a stand-by list.
- Tickets will not be issued, but there will be a check-in, documenting the attendance of those who were screened and allowed entrance.
- Only those who have registered will be permitted to join the service (see Non Registered procedure below).

ENTRANCE

- Doors will open 30 minutes before the start of Service. Households will park their cars and stand in line while maintaining social distancing from other households outside the main doors. Red floor markings indicate where households should stand to ensure social distancing (see pg 4 for photographs).
- The far-left doors will be the only doors open for entrance and will be clearly marked with signage as the Main Entrance.
- Everyone entering the building will be required to sanitize their hands and wear a mask. Attendees are encouraged to bring their own non-medical mask/face coverings.
- Signage pertaining to proper hand sanitization practices and requirements for face masks will be posted at this station, along with screening questions.

SCREENING

- Households will enter through the Main doors and follow the line to the Check-In Station in the center of the lobby. Households are required to be screened and seated together.
- Attendees are to give the names of all household members in attendance and confirm that they all continue to comply with the Covid Self-Assessment.
- Those who previously registered and answer NO to all screening questions will be checked in. The household will be informed of Washroom procedures, and if they have young children, will be notified of the lobby waiting area which can be used if required.
- Those who do not pass the screening or present symptoms of COVID will be asked to exit through the far right lobby doors. Those presenting symptoms will be encouraged to go home and get tested.
- The household will be directed towards the far-left worship center doors, which will be the only doors receiving people into the worship center. Red floor markings will indicate direction and ensure households remain 10 feet apart.
- Once the count of those in attendance reaches 150 the main doors will be closed and no further entry will be permitted.

Screening Questions:

- Do you have a fever, new or existing cough, or difficulty breathing?
- Have you returned from travel outside of Canada in the last 14 days?
- Have you had contact with a confirmed or suspected case of COVID-19 in the last 14 days?
- Have you been asked to self-quarantine by Public Health or had contact with anyone who has been told to self-quarantine themselves in the last 14 days?

**Healthcare workers wearing appropriate PPE are not considered to have been exposed.*

**If you are 60 years of age or older, or are immunocompromised due to medication or an existing health condition or disease, you may be more susceptible to death or serious illness from COVID-19 and should take increased measures to avoid infection, including wearing a face mask, social distancing, or participating in online services.*

NON REGISTERED

- If the number of registrants exceeds the number of allowable guests, the attendees will be asked to wait until all registered participants are seated.

SEATING

- The lead Usher will ask how many seats are required and direct them to one of two Seating Ushers.
- Attendees will be seated on either the left or right center sections, and will be seated from front to back.
- To ensure social distancing, households will have a minimum of four empty seats in between them, and will be seated every other row. Once the two center sections are filled, seating will begin in the far right and far left sections.
- Attendees will be required to remain seated for the whole worship service and are advised to leave only when dismissed or when they require to use the washroom.
- If attendees need to use the washroom, they are to proceed to the back of the Worship Centre using the Isle closest to them and head directly to the center doors worship. A volunteer will direct them to the washroom.

EXIT

- At the end of the worship service the users will dismiss attendees, one row at a time, starting from the back.
- Attendees will be directed through the center doors, and will exit out of the building through the centers in the lobby marked as the Exit.
- Standing and socializing in the lobby will not be permitted.

PHYSICAL DISTANCING

- In order to meet the provincial requirement that attendance remains less than 30% of the building capacity, we will only be permitting 150 individuals into service at Hope Mississauga.
- Everyone is required to maintain physical distancing whenever possible.

SINGING

- You are welcome to sing!
- The provincial and municipal guidelines has lifted suspension on congregational singing indoors.

FACE MASKS

- Face masks are mandatory according to the municipal by-law. All volunteers will be serving with masks on.

Who doesn't need to wear a mask?

- Children under the age of two. These very young children must not wear a face covering because of the risk of suffocation.
- People who require accommodation in accordance with the Ontario Human Rights Code.
- Individuals with a medical condition that makes it difficult to wear a mask. This can include but is not limited to:
 - Medical condition, mental health condition, cognitive condition or disability that prevents wearing a mask or face covering.
 - Medical condition that makes it difficult to breathe or someone who is unconscious or incapacitated.
 - People who are hearing impaired, or are communicating with a person who is hearing impaired, and where the ability to see the mouth is essential for communication.
- Those with exemptions are not required to provide proof, and we are not permitted to ask for proof.
- Not everyone is able to wear a mask. Please be respectful of people who are unable to wear one due to health, age or other reasons.

HAND SANITIZING STATIONS

- Hand sanitizer stations will be available at all main entrances and exits and throughout the lobby. Attendees are requested to sanitize as they enter the main lobby.

WASHROOMS

- There will be one set of washrooms available located on the far right side of the lobby. While they are available for you to use, we will ask attendees to refrain from using them if they are able.
- The Washroom attendant will allow only one attendee or household at a time to enter the washroom.
- Signage and posters with correct handwashing procedures will be placed in all washrooms and in the lineup to use the washrooms.
- Once an attendee is finished in the washroom they will be directed back to the center Check In Station where they will be directed back in line through the entrance on the far left worship center doors. This is the same door they originally entered the worship center.
- Drinking fountains will be covered and not available for use.

PARKING

- There is sufficient parking in front of the building. Drop offs will not be permitted, households must park together and enter through the far left Main Entrance doors.

SUPPLIES/OFFERING/COMMUNION

- There will be no distributing of any shared materials (shared bibles, pens, etc).
- Single use items will continue to be made available (handouts, etc).
- Offering will remain online.
- Communion will be provided in pre-sealed, single-serve packages.

HOPE KIDS

- There will be no kids ministry during service. All children and youth are expected to remain with their parents at all times when in the building.
- Hope Kids sermon handouts will be made available to help children participate in the service.

FACILITY SANITIZATION

- At Hope Mississauga, the worship center and washrooms are sanitized before and after our worship service. They will be using a specialized spray machine for this purpose. For added peace of mind, the space is not being used by other groups on Wednesday or Thursday, reducing the risk of surface contamination leading up to our worship gatherings.

STREAMED SERVICE

- We understand that everyone has different comfort levels and household considerations that influence your ability to safely regather; therefore, regardless of any re-gathering plans for in-person services, we will continue to stream services at this time.



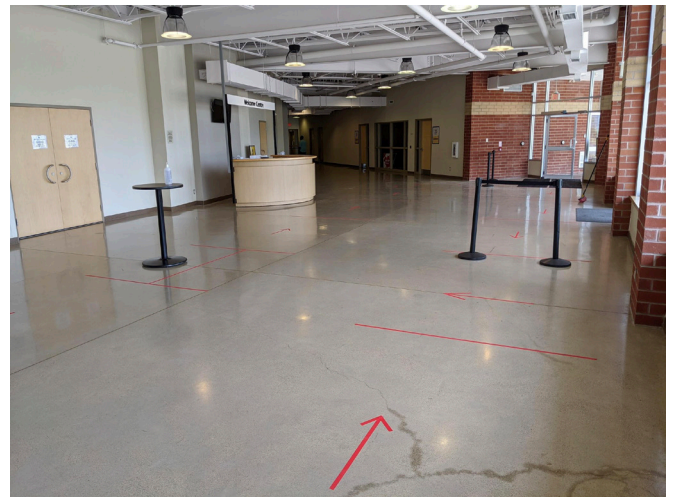
OUTSIDE LINEUP



MAIN ENTRANCE DOOR



LOBBY LINEUP



LOBBY CHECK-IN AREA

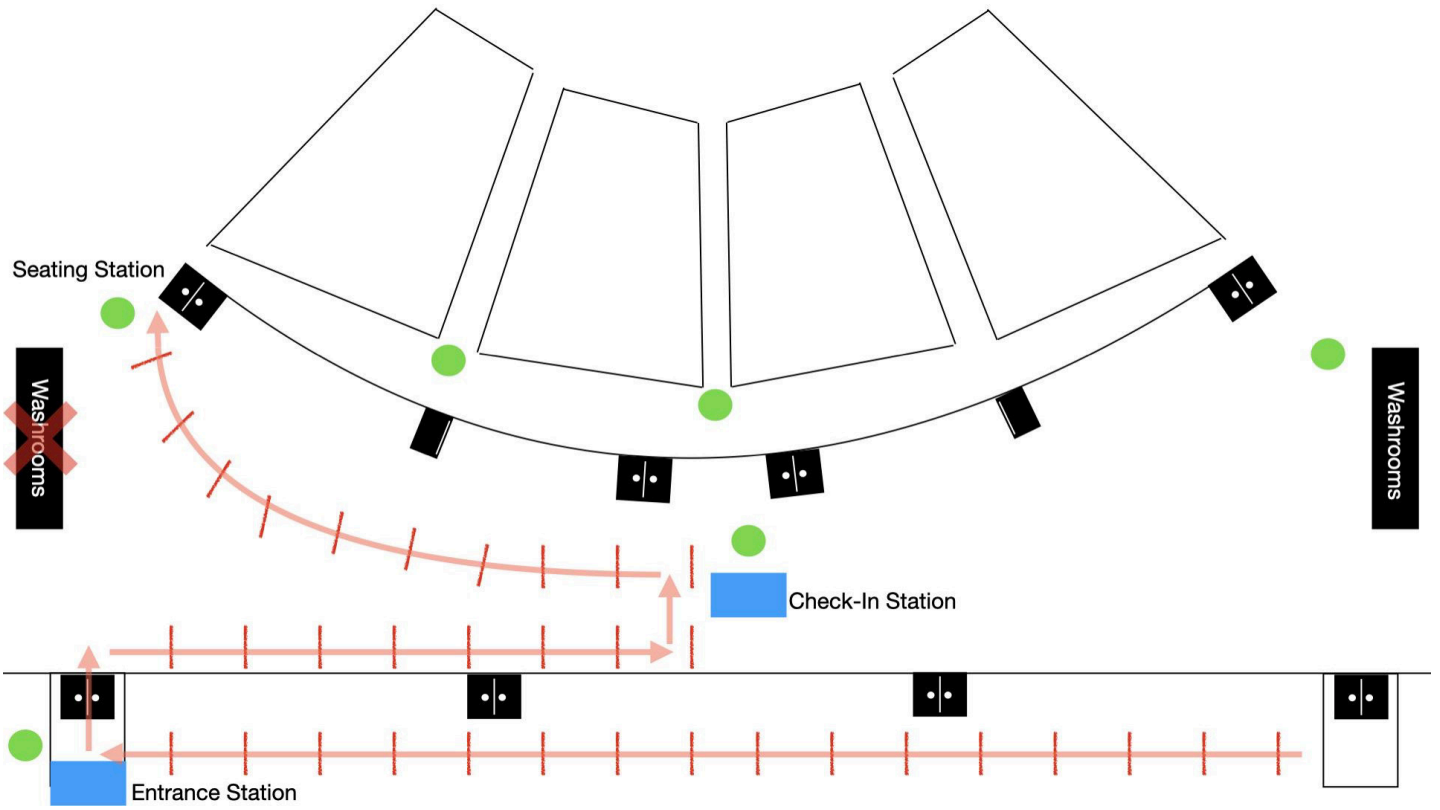


SEATING LINEUP



WORSHIP CENTER ENTRANCE

ENTRANCE FLOW



EXIT FLOW

